



# Tri-City Storm Booster Club

Website: [www.stormboosterclub.com](http://www.stormboosterclub.com)

E-Mail: [info@stormboosterclub.com](mailto:info@stormboosterclub.com)

Vol. 9, No. 2

PO Box 2101, Kearney, NE 68848

October 2009

## October General Meeting

Tuesday, October 27, 2009 at 6:30 p. m. - UJP Room on 2<sup>nd</sup> Floor

Meet some more Storm Players  
Get acquainted - Ask them questions



Michael Montrose --  
creating



Matt Johnson --  
creating



Finished and on display



Finished and on display

**Most Creative**  
**Andrew Panzerella**



## Pumpkin Raffle

The annual Booster Club Pumpkin Raffle was held during the Fargo game on October 16<sup>th</sup>. Pumpkins were provided by Helgoth's Pumpkin Patch in St. Libory. Each player decorated one.

Fans voted for the scariest and the most creative. They also purchased raffle tickets which they dropped into bags by their favorite pumpkins. At the end of the second intermission one ticket was drawn from each bag to determine the winner of each decorated pumpkin. Winning numbers were posted by the pumpkin display tables and by the end of the game all of the pumpkins had been claimed. With care they might last until Christmas.

(Top 4 photos by Scott & Ethel White.  
Panzerella's by Amber Hinricksen, Briola's by Jamie Legates)

**Scariest - Tyler Briola**



### Pumpkins Donated by Helgoth's Pumpkin Patch

121 Eagle Rd  
St. Libory, NE  
308.687.6378 / 308.379.4275

Thank you



Thank you



Thank you

# ***New This Year - Some USA Hockey Official Rule Changes & Additions for 2009-2011***

Many of the additions to the new rule book are for clarification as is the case of these two paragraphs:

*Players shall body check within the rules. Any use of the hands or stick or extension of the arms to body check an opponent will be penalized as unnecessary roughness.*

*Any avoidable contact after the whistle shall be penalized strictly, including scrum situations around the goal. Officials are instructed to assess an additional penalty to those players acting as the aggressor or who instigates any contact after the whistle.*

In many cases the type of penalty has been inserted after the words "minor penalty". For example the team captain or any player who comes off the bench to protest with an official is assessed a minor penalty. Now the rule book specifies that penalty to be *for unsportsmanlike conduct*.

Before a game the Referee may request the manager or coach of the visiting team to furnish the Referee or Official Scorer with a list of their starting lineup. This year the rules state this must be done *no less than 20 minutes before the start of the game*.

## **Equipment**

Half shields must be *clear, non-tinted*.

In the rules about sticks, a new sentence has been added, "*The end of a hollow shaft must be fully covered*." That one's kind of obvious, isn't it?

There is an extensive section describing the exact measurements for goalie padding which will probably be of interest only to those who play that position.

## **Officials**

Did you think the Off Ice Official who sits in the penalty box is there just to open the door when the penalty has expired? Wrong. Ever notice he is holding a clipboard? That's because he has a few other duties also.

He has an official form on which he keeps a record of each penalty including the player's name, the infraction, length of time for the penalty and the time the penalty begins.

He also keeps a record of penalty shots, the player awarded the shot and the result of the shot. Starting this year he also has to record *the name of the offending player*.

And you thought he just had a closer view of the game.

## **Face-offs**

One part of the face-off rules states that "When an infringement of a rule has been committed or a stoppage of play has been caused by any player of the attacking team in the Attacking Zone the ensuing face-off shall be made in the Neutral Zone on the nearest face-off spot."

New this year – "*The exception to this rule is when the puck leaves the rink directly after striking the goal frame, in which case a face-off occurs nearest to that goal*."

## **Fighting**

New addition to the rules on fighting – "*If any player bangs their stick during or immediately following a fight their team shall be assessed a fine up to fifty dollars (\$50.00) per player, following one written warning from the League per season*."

## **Grabbing the face mask**

We know it is against the rules to grab an opposing player's face mask and can result in a minor penalty or a major penalty plus a game ejection or a game misconduct. Now the following has been added, "*If the violation occurs during an altercation a major plus game misconduct penalty must be assessed*." Must be assessed.

## **Icing the Puck**

"Icing the Puck" is complete when the puck crosses the goal line.

This year the following has been added, "*unless an attacking player, who is onside at the blue line and with no opponent between him and the goal line and who is clearly in a position to be the first player to touch the puck, icing shall not be called. This decision by the Official shall be made no later than the first player reaching the end zone face-off dots. If the puck enters the goal in this situation "icing" shall not be called and a goal shall be awarded*." [Editorial underlining. Glad that's clarified]

## *The Booster Club Meet and Greet - Some Profiles of the Latest Members to Join the Team*

Following the Fargo game on Oct. 16 Booster Club members gathered upstairs in the VIP room to meet with the Storm players. It was an opportunity for our members to meet and talk informally with the players. Host families and some player's families were also there.

It was a time to ask questions and fill in some information about the newest players to join the team. As a result, here are profiles of the six players we have not heard about yet.



**Tyler Amburgey** – D, 6'2",  
210, 5/6/1991

Tyler's home town is Rowlett, TX. Rowlett has grown rapidly in recent years in its development as a bedroom community on the

Dallas-Ft. Worth metropolitan area. Here Tyler attended Rowlett High School and played on the Texas Attack, a U18 AAA team. In 2006 he played for the Alliance Bulldogs Major Bantam team in the Dallas-Ft. Worth area.

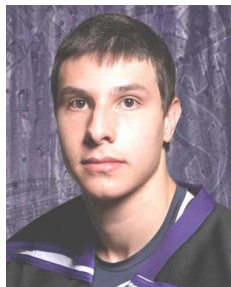
During the following two seasons he was a member of the US National U18 team at Ann Arbor, MI. He has been described as a "stay-at-home defenseman who makes a good first pass and plays physically" and as "a big, strong, stay at home defenseman." Last spring in an interview he said, "I definitely see myself as a being a physical D in the corner, getting the puck up and out to the forward so they can go."

Central Scouting has him ranked on their draft prospects list. He will be eligible for NHL draft in 2010.

Last spring Tyler was the Waterloo Black Hawk's first draft pick and then in September he was traded for the Storm's number one draft pick.

**Tyler Briola** – D, 6'0", 190,  
4/24/1990

Tyler Briola comes from Parker, CO, which is located on the southeast edge of the Denver metropolitan area. He played hockey for the Pikes Peak



Miners midget team and then at the end of the season last year played four games for the Wichita Falls Wildcats in the NAHL. When asked how that came about, Tyler explained.

Two days before the trade deadline in February he was invited to join the Wildcats. But his team had just won the state championship and was going to national quarter finals in Texas.

As captain he did not want to desert his team so he stayed with them until they were eliminated. Then he went immediately to Wichita Falls. He had already graduated from high school the year before so that was not a problem. But he had only one day to give notice that he was leaving his job.

Tyler actually played seven games for the Wildcats. He played in the last four games of their regular season and then in three playoff games.

In the NAHL if a player plays ten games for a team then they have his playing rights for a year. Since he was three games short, the plan was that Wichita Falls would draft him but that did not work because Alaska grabbed him first.

Tyler attended the Storm's tryout camp and made the cut. Then he was invited to join the team. His "plan B" was that if things did not work out here he would go to Alaska.

But, as we have seen, things have worked out well and he is now our defenseman wearing #5.

**Matt Johnson** – F, 5'10",  
185, 5/16/1991

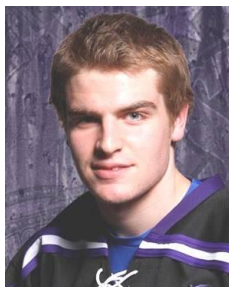
Matt Johnson comes from Stillwater, MN, which is on the St. Croix River on the north edge of the Twin Cities metropolitan area.



Matt was on the Stillwater High School hockey team, the Ponies, through his junior year. The following year he went to Waterloo where he was a member of the Black Hawks last season. Then on the 29<sup>th</sup> of September this year he was part of the trade which brought him and Tyler Amburgey to Kearney in exchange for Kinman and DeMartino. (Go to p. 4)



Tri-City Storm Booster Club  
 P O Box 2101  
 Kearney NE 68868



**Tucker Long** – F, 6', 190,  
 2/26/1992

Tucker's hometown, Ballwin, MO, is a suburb in the St. Louis Metropolitan Area. He attended Parkway West High School in Ballwin and played on a St. Louis Jr. Blues AAA midget team. During the 2006-2007 season he had four hat tricks. A year ago Tucker was the Cedar Rapids RoughRiders' first Futures Draft selection.

Although Tucker and T. J. Schlueter both come from the St. Louis area and both skated for the St. Louis Jr. Blues they were not on the same team. They were teammates on a Squirts team however.



**Luke McManus** – D, 6'1", 190,  
 5/9/1990

Luke comes from Apple Valley, MN. He attended Rosemount High School. Rosemount is directly east of Apple Valley. Both are suburbs of Minneapolis.

In October 2007 Luke was on the Central Scouting list of players to watch for the NHL draft. In January 2008 he committed to Minnesota-Duluth. At that time they thought it would be for the 2009 season.

Luke started the 2008-2009 season with the Omaha Lancers. Midseason he was traded to Indiana. Then earlier this month he was traded to the Storm for a 5<sup>th</sup> round draft choice next spring.


**T.J. Schlueter**, F, 6", 193,  
 10/23/1991

T. J. is from Chesterfield, a community about 25 miles west of downtown St. Louis, which means it is now on the outer ring of suburbs of St. Louis. During the



2006-2007 season T. J. was a member of the Chesterfield CSDHL Midget Minor AA team. He had four game winning goals that year. The next season and last season he skated for the St. Louis Selects Midget team.

T. J. was a September 2008 Futures Draft Storm selection.



We have two birthdays to celebrate this time.

TJ Schlueter turns 18 on October 21<sup>st</sup>.  
 Max Tardy will be 19 on October 27<sup>th</sup>.

**Storm Booster Club**  
 Official Booster Club of the Tri-City Storm  
 stormboosterclub.com P O Box 2101, Kearney, NE 68848

Board of Directors  
 Kathy Knapp - President  
 Betty Smith – 1<sup>st</sup> Vice President – Membership  
 Jan Hankey – 2<sup>nd</sup> Vice President – Special Projects  
 Mardi Anderson – Secretary & Newsletter      Jennifer Turek – Treasurer  
 Cindy Rademacher – Director – Bus Treats      Jamie Legates – Director  
 Travis Flies – Director